

Launchboard Development

Interface Control Document (ICD) for Student
Success Metrics

Launchboard Development Team to California
Community Colleges

version 1.0

12/22/2022

Table of Contents

1. Revision History	4
2. Purpose of Interface Control Document	6
2.1 Introduction and Document Scope.....	6
3. Assumptions/Constraints/Risks	7
3.1 Assumptions	7
3.2 Constraints	7
4. General Interface Requirements	8
4.1 Data Transfer Method.....	8
4.2 Transfer Cadence	8
4.3 Validation	8
4.4 Exception Handling.....	8
4.5 Security and Privacy	8
4.5.1 Memorandum of Understanding (MOU)	8
4.5.2 Security	8
5. Systems Description.....	9
5.1 Data Flow	9
5.2 Launchboard Development	9
5.2.1 Data Content	9
6. Detailed Interface Requirements	10
6.1 Source Table Listing.....	10
6.2 Definition for locale_id Table	10
6.2.1 File Layout	10
6.3 Definition for year_id Table	11
6.3.1 File Layout.....	11
6.4 Definition for disagg_id Table.....	11
6.4.1 File Layout	12
6.5 Definition for subgroup_id Table	12
6.5.1 File Layout	12
6.6 Definition for journey_id Table	13
6.6.1 File Layout	13
6.7 Definition for snapshot_view_metrics Table	13
6.7.1 File Layout	14
6.7.2 Resource Diagram	22
6.8 Definition for cohort_view_metrics Table	22
6.8.1 File Layout	23
6.8.2 Resource Diagram	27
6.9 Definition for student_demographics Table	27

6.9.1	File Layout	28
6.10	Definition for apprenticeship_metrics Table.....	30
6.10.1	File Layout	30
6.10.2	Resource Diagram	32
6.11	Definition for award_metrics Table.....	32
6.11.1	File Layout	32
6.11.2	Resource Diagram	34
6.12	Definition for award_unit_metrics Table.....	34
6.12.1	File Layout	35
6.12.2	Resource Diagram	38
6.13	Definition for cccapply_metrics Table	38
6.13.1	File Layout	39
6.13.2	Resource Diagram	41
6.14	Definition for cteos_metrics table	41
6.14.1	File Layout	42
6.14.2	Resource Diagram	43
6.15	Definition for student_locale_distinct Table	43
6.15.1	File Layout	44
6.16	Definition for student_locale_distinct_cv Table	45
6.16.1	File Layout	45
7.	Qualification Methods	48
	Appendix A: Acronyms	49
	Appendix B: Referenced Documents	50
	Appendix C: Approvals.....	51

1. Revision History

Version Number	Date	Author/Owner	Description of Change
0.1	7/22/2022	Kyle Davis (WestEd)	Enter table, variable, process descriptions – Initial Version
0.2	7/28/2022	Kyle Davis (WestEd)	Applied recommended updates, added context for Student Success Metrics, referenced external links, provided column formats for metric specific columns, added assumptions and constraints.
0.3	8/23/2022	Kyle Davis (WestEd)	Updated specs to include cteos_metrics table.
0.4	9/9/2022	Kyle Davis (WestEd)	Updated clarification for metrics labeled as “bit or tinyint” Updated in-line MDD links to point to production rather than staging Aligned formatting
0.5	10/5/2022	Kyle Davis (WestEd)	Added documentation for term and year elements Re-named “CC_Comis_Code” to “IPEDS_Code” to be more accurate Corrected data type for Student_ID Moved CV_xxx_Courses elements to their proper tables Corrected metric IDs where needed Re-generated ERD images Re-ordered documentation to match order of files generated Added Patty Sanders as CCCCCO approver Clarified colleges on the quarter system to receive columns with different labels than colleges on the semester system
0.6	10/10/22	Karen Beltramo (WestEd)	Added in links to metrics in MDD where appropriate
1.0	12/22/22	Kyle Davis (WestEd)	Finalized links to metrics in MDD Cleaned up references to columns not included Added final approval

2. Purpose of Interface Control Document

The intended audiences of the Launchboard Development Team to California Community Colleges Interface Control Document (ICD) - Student Success Metrics are staff in college Institutional Research Offices or in the Chancellor's Office Digital Innovation & Infrastructure or Research and Data Analytics.

This Interface Control Document (ICD) is a document that tracks the necessary information required to describe the metric outcomes calculated from the data provided to the Launchboard Development Team from the CCCCCO Management Information System (MIS) which are displayed in the Student Success Metrics Launchboard Dashboard.

The purpose of the ICD is to clearly communicate the developed inputs that are used to calculate the metrics present in Student Success Metrics, and provide clear understanding of the content, format, structure, constraints and rules to provide guidance for California Community Colleges on the architecture of the system that was developed to accurately calculate this information for display.

2.1 Introduction and Document Scope

This ICD describes the student level data provided from the Launchboard Development Team to California Community Colleges.

This ICD provides the following information:

- Source data table names
- Source table format including data element name, sequence and data types
- Assumptions where appropriate
- Security considerations

3. Assumptions/Constraints/Risks

3.1 Assumptions

Assumptions for this interface include:

1. User is familiar with the MIS Data Element Dictionary.

3.2 Constraints

Constraints for this interface include:

1. Specific metric calculations are not within the scope of this document. Please refer to the Metric Definition Document for more information on this.

4. General Interface Requirements

4.1 Data Transfer Method

CCCCO MIS will make data files available via Data on Demand to each member district.

4.2 Transfer Cadence

Student-level data used to calculate Student Success Metrics will be provided annually following the end of the development cycle – typically in April of each year.

4.3 Validation

Any issues with data retrieval or validation should be communicated to cccmisedit@cccoco.edu.

4.4 Exception Handling

There are currently no exception handling requirements.

4.5 Security and Privacy

4.5.1 Memorandum of Understanding (MOU)

Authority for this data transfer is under the Data Services Grant agreement.

4.5.2 Security

It is the responsibility of California Community College member districts to secure all data once retrieved from Data on Demand.

5. Systems Description

This section briefly describes the data flow from the Launchboard Development Team to CCCC MIS for distribution to member districts through Data on Demand.

5.1 Data Flow

The Launchboard Development Team will provide the processed student level data to the CCCC MIS Data on Demand team at the end of each dashboard development cycle. The Launchboard Development Team will calculate student outcomes based on the specifications defined in the Launchboard Metric Definition Documents. The Launchboard Development Team will provide the student-level outcomes to the CCCC MIS system for use by its stakeholders.

5.2 Launchboard Development

5.2.1 Data Content

Data provided includes student level outcomes calculated using the Student Success Metrics Metric Definition Document, as well as demographic information, and reference information to describe coded outcomes.

6. Detailed Interface Requirements

6.1 Source Table Listing

The following is the comprehensive listing of the 15 source tables used in this interface:

1. locale_id
2. year_id
3. disagg_id
4. subgroup_id
5. journey_id
6. snapshot_view_metrics
7. cohort_view_metrics
8. student_demographics
9. apprenticeship_metrics
10. award_metrics
11. award_unit_metrics
12. cccapply_metrics
13. cteos_metrics
14. student_locale_distinct
15. student_locale_distinct_cv

6.2 Definition for locale_id Table

The locale_id table comprises all locales reportable in the Launchboard Dashboards – including the Statewide, Macroregion, Microregion, and District roll-up locales.

6.2.1 File Layout

Column Name	Data Type	Is Nullable	Is PK	Brief Description
locale_id	Smallint	N	Y	Integer id value for each reported specific locale - developed for Launchboard
Region_hierarchy	Tinyint	N	N	Integer id value for each reported locale type - developed for Launchboard
Locale_type	Varchar(25)	Y	N	Description of the type of locale represented
Locale_name	Varchar(255)	Y	N	Name of the locale represented
Ipedes_code	Char(6)	Y	N	If applicable, the IPEDS code for the college represented
College_name	Varchar(255)	Y	N	If applicable, the name of the college represented

District_comis_code	Char(3)	Y	N	If applicable, the MIS code for the district or college represented
District_name	Varchar(255)	Y	N	If applicable, the district name for the district or college represented
Microregion_comis_code	Tinyint	Y	N	If applicable, the microregion code for the microregion, district, college represented
Microregion_name	Varchar(255)	Y	N	If applicable, the microregion name for the microregion, district, college represented
Macroregion_comis_code	Tinyint	Y	N	If applicable, the macroregion code for the macroregion, microregion, district, college represented
Macroregion_name	Varchar(255)	Y	N	If applicable, the macroregion name for the macroregion, microregion, district, college represented

6.3 Definition for year_id Table

The year_id table comprises a range of tinyint values for years reportable in the Launchboard Dashboards.

6.3.1 File Layout

Column Name	Data Type	Is Nullable	Is PK	Brief Description
year_id	Tinyint	N	Y	Integer id value for a range of possible years - developed for Launchboard
year	smallint	N	N	Leading calendar year of academic year (e.g., academic year 2019-2020 is represented by a value of 2020)
academic_year	Char(9)	N	N	The unambiguous character representation of the academic year indicated. e.g. "2018-2019"

6.4 Definition for disag_id Table

The disag_id table comprises all disaggregations present in the Launchboard Dashboards.

6.4.1 File Layout

Column Name	Data Type	Is Nullable	Is PK	Brief Description
disagg_id	Tinyint	N	Y	Integer id value for a disaggregation - developed for Launchboard
label	Varchar(100)	Y	N	Name of the disaggregation represented
Metric_id	Char(3)	Y	N	If applicable, the metric ID that represents the calculation of this disaggregation – referenced in the Metric Definition Document
Standard_disagg	Bit	Y	N	Whether or not the disaggregation is standard across all dashboards (Age, Gender, and Race/Ethnicity are the three standard disaggregations)

6.5 Definition for subgroup_id Table

The subgroup_id table comprises all subgroups for each disaggregation present in the Launchboard Dashboards.

6.5.1 File Layout

Column Name	Data Type	Is Nullable	Is PK	Brief Description
disagg_id	Tinyint	N	N	Integer id value the disaggregation a subgroup belongs to - developed for Launchboard References disagg_id.disagg_id
Subgroup_id	Tinyint	N	Y	Integer id value for a subgroup - developed for Launchboard
label	Varchar(100)	Y	N	Name of the subgroup represented
Sort_order	Tinyint	Y	N	Display rank
Code	Char(2)	Y	N	Coded value that represents the subgroup
Metric_id	Char(3)	Y	N	If applicable, the metric ID that represents the disaggregation which contains the calculation of this subgroup

				Referenced in the Metric Definition Document
--	--	--	--	--

6.6 Definition for journey_id Table

The journey_id table comprises all journeys present in the Launchboard Dashboards, specifically Student Success Metrics.

6.6.1 File Layout

Column Name	Data Type	Is Nullable	Is PK	Brief Description
journey_id	Tinyint	N	Y	Integer id value each student journey - developed for Launchboard
label	Varchar(255)	Y	N	Name of the journey represented
Code	Varchar(2)	Y	N	Coded value that represents the journey – referenced in the Metric Definition Document
years	tinyint	Y	N	If applicable, the number of years for with metrics are calculated within the journey represented – referenced in the Metric Definition Document

6.7 Definition for snapshot_view_metrics Table

The snapshot_view_metrics table is one of several wide tables representing student outcomes. Each record is a unique combination of student (with two possible unique identifiers), locale (represents a college in this dataset), and year, with columns for the measured metric outcomes.

[The enrollment requirement for Student Success Metrics](#) is used for population of this table. Each student in this table can also meet the enrollment requirement for Community College Pipeline and Strong Workforce Program if an additional student filter is provided. This additional filter will not be provided with the initial version of this data.

The majority of the metric columns are represented by the naming convention:

[prefix]_[metric_id]_[suffix]

Examples:

- CO_122
- CO_405_Units
- CO_408_Courses

This convention, explained:

1. Prefix (CO)

The prefix “CO_” represents the aligned snapshot metric definition within the Chancellor’s Office metric library developed for the Launchboard Dashboards and can be considered as equivalent to “SM_” for Student Success Metrics.

If a dashboard student filter is provided for a dashboard, the prefix can be considered the prefix for that dashboard (i.e., if an SWP filter is provided along with this data, an inner join from this table to that cohort means that “CO_” can then be considered “SW_” instead). This is meant to represent the alignment of measurements across dashboards.

2. Metric ID (122, 405, 408)

This is the metric ID of the measurement in the given column. Please reference the relevant [Metric Definition Document](#) for details.

3. Suffix (Units, Courses)

If a suffix is not provided, the metric is a binary outcome (or ternary outcome in only one case).

If a suffix is provided, the metric is some other numeric outcome for that metric. The numeric outcomes included in this table are:

- a. Courses – A unique count of courses for a student, at a locale, in a year
- b. Units – A total number of units completed for a student, at a locale, in a year

6.7.1 File Layout

Column Name	Data Type	Is Nullable	Is PK	Brief Description
Year_id	Tinyint	N	Y	Integer id value the year for which a student is being measured References year_id.year_id
Locale_id	Tinyint	N	Y	Integer id value the locale for which a student is being measured References locale_id.locale_id
Isk_id	int	N	Y	Integer ID value for a student’s derived key. This is established as the student identifier for Launchboard dashboards (i.e. unique student counts are unique isk_id counts). This key is derived from a student’s name, gender, and date of birth and converted to an integer value based on a hashing algorithm. Neither the

				student's PII nor the hashed values are provided in this data set.
Student_id	Varchar(9)	N	Y	A student's SB00 value from MIS
Id_status	Char(1)	N	Y	A student's SB01 value from MIS
CO_100	Bit	Y	N	SM 100 Adult Education or English as a Second Language Students
CO_101	Bit	Y	N	SM 101 Short-Term Career Students
CO_102	Bit	Y	N	SM 102 Degree/Transfer Students
CO_106	Bit	Y	N	SM 106 Perkins Economically Disadvantaged
CO_108	Tinyint	Y	N	SM 108 First-Generation
CO_110	Bit	Y	N	SM 110 Foster Youth
CO_112	Bit	Y	N	SM 112 DSPS or Students with Disabilities
CO_114	Bit	Y	N	SM 114 Veterans
CO_121	Bit	Y	N	SM 121 Undecided/Other Students
CO_122	Bit	Y	N	SM 122 All Students
CO_123	Bit	Y	N	SM 123 Lesbian/Gay/Bisexual/Transgender
CO_125	Bit	Y	N	SM 125 Students Who Ever Received a Pell Grant
CO_127	Bit	Y	N	SM 127 Students Who Ever Received a College Promise Grant/Board of Governor's Waiver - including award amounts of \$0

CO_128	Bit	Y	N	SM 128 Students Who Ever Received a College Promise Grant/Board of Governor's Waiver - excluding award amounts of \$0
CO_133	Bit	Y	N	SM 133 Homeless Students
CO_203	Bit	Y	N	SM 203SW All Students Who Exited Higher Education
CO_235	Bit	Y	N	SM 235SW All Students Who Earned 12 or More Units at Any Time at Any Community College and Who Exited California Community College
CO_324	Bit	Y	N	SM 324SW All Students Who Students Who Enrolled in Credit Basic Skills or Noncredit ESL, ABE or ASE Courses
CO_325	Bit	Y	N	SM 325SW All Students Who Were Enrolled in the Fall Term of the Selected Year
CO_326	Bit	Y	N	SM 326SW All Students Who Enrolled in Noncredit Adult Basic Education or ESL
CO_327	Bit	Y	N	SM 327SW All Students Who Enrolled in ABE, ESL or ASE
CO_332	Bit	Y	N	SM 332SW All Students Who Took Credit Courses for the First-Time in the District in the Selected Year
CO_333	Bit	Y	N	SM 333SW All Students Who Took Courses in the Fall Term of the Selected Year Who Did Not Transfer and Who Did Not Earn an Award
CO_337	Bit	Y	N	SM 337SW All Students Who Took Noncredit Courses Coded on a

				CTE TOP Code or Flagged as a Workforce Preparation Course with a Noncredit Enrollment in the Selected Year
CO_338_courses	Int	Y	N	<p>SM 338SW All Student Credit Enrollments with Grades Allowable for Course Success Rate Calculation in the Selected Year</p> <p>Used to total the number of courses completed for SM 338 All Student Credit Enrollments with Grades Allowable for Course Success Rate Calculation in the Selected Year and SM 408 Course Success Rate.</p>
CO_400	Bit	Y	N	SM 400Sx Students in Selected Student Journey Who Completed an Educational Functioning Level Gain (EFL and Course Progression)
CO_402	Bit	Y	N	SM 402Sx Students in Selected Student Journey Who Earned Nine or More Career Education Units Within the District in a Single Year
CO_403	Bit	Y	N	SM 403Sx Students in Selected Student Journey Who Completed a Noncredit CTE or Workforce Preparation Course
CO_404_units	Decimal(10,3)	Y	N	SM 404Sx Students in Selected Student Journey Who Successfully Completed Unit Thresholds in Fall Term at Any College

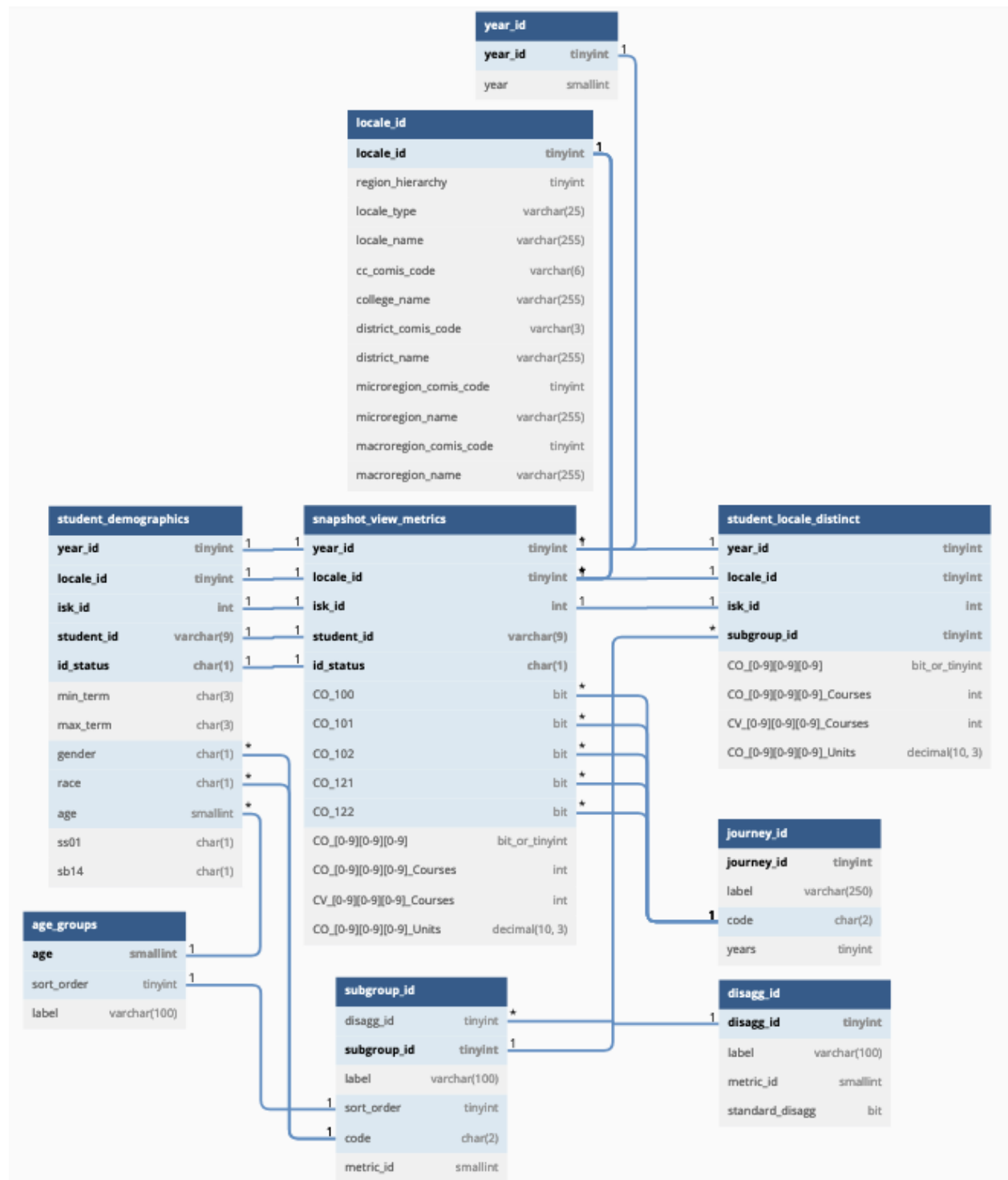
CO_405_units (CO_445_units for colleges on a quarter system)	Decimal(10,3)	Y	N	SM 405Sx Students in Selected Student Journey Who Successfully Completed Semester (Quarter) Unit Thresholds in the Selected Year at Any College (SM 445Sx Quarter Units)
CO_406	Bit	Y	N	SM 406Sx Students in Selected Student Journey Who Persisted from Fall to Spring at the Same College (SM 424Sx Wrapper Metric)
CO_407	Bit	Y	N	SM 407Sx Students in Selected Student Journey Who Persisted from Fall to Spring at Any Community College (SM 424Sx Wrapper Metric)
CO_408_courses	Int	Y	N	SM 408Sx Course Success Rate for Students in Selected Student Journey Used to total the number of courses completed for SM 338 All Student Credit Enrollments with Grades Allowable for Course Success Rate Calculation in the Selected Yea and SM 408 Course Success Rate.
CO_500	Bit	Y	N	SM 500Sx Students in Selected Student Journey Who Transitioned to ASE
CO_501	Bit	Y	N	SM 501Sx Students in Selected Student Journey Who Completed Both Transfer-Level Math and English Within the District in the First Year Aligned with SCFF (SM 504Sx Wrapper Metric)

CO_502	Bit	Y	N	SM 502Sx Students in Selected Student Journey Who Completed Transfer-Level Math Within the District in the First Year Aligned with SCFF (SM 504Sx Wrapper Metric)
CO_503	Bit	Y	N	SM 503Sx Students in Selected Student Journey Who Completed Transfer-Level English Within the District in the First Year Aligned with SCFF (SM 504Sx Wrapper Metric)
CO_541	Bit	Y	N	SM 541Sx Students in Selected Student Journey Who Completed Both Transfer-Level Math and English Within the District in Their First academic year from First Term or Within Three Years for Credit ESL Students (SM 544Sx Wrapper Metric)
CO_542	Bit	Y	N	SM 542Sx Students in Selected Student Journey Who Completed Transfer-Level Math Within the District in Their First academic year or Within Three Years for Credit ESL Students (SM 544Sx Wrapper Metric)
CO_543	Bit	Y	N	SM 543Sx Students in Selected Student Journey Who Completed Transfer-Level English Within the District in Their First academic year or Within Three Years for Credit ESL Students (SM 544Sx Wrapper Metric)
CO_602	Bit	Y	N	SM 602Sx Students in Selected Student Journey Who Transitioned to Postsecondary

				for the First-Time (SM 600Sx Wrapper Metric)
CO_614	Bit	Y	N	SM 614Sx Students in Selected Student Journey Who Transferred to a CSU or UC Institution (SM 622Sx Wrapper Metric)
CO_615	Bit	Y	N	SM 615Sx Students in Selected Student Journey Who Transferred to a Private College In-State (SM 622Sx Wrapper Metric)
CO_616	Bit	Y	N	SM 616Sx Students in Selected Student Journey Who Transferred to any Out of State Institution (SM 622Sx Wrapper Metric)
CO_620	Bit	Y	N	SM 620Sx Students in the Selected Student Journey Who Transferred to a Four-Year Postsecondary Institution (SM 622Sx Wrapper Metric)
CO_802	Bit	Y	N	SM 802Sx Proportion of Students After Exit Who Attained the Living Wage in Selected Student Journey
CV_338_courses	Int	Y	N	<p>SM 338Cx Credit Enrollments for All Cohort Students with Grades Allowable for Course Success Rate Calculation in Their First Year from First Term</p> <p>Used to total the number of courses completed for SM 338 All Student Credit Enrollments with Grades Allowable for Course Success Rate Calculation in the</p>

				<p>Selected Yea and SM 408 Course Success Rate.</p> <p>Note: CV_338 and CV_408 are the only “cohort view” metrics to live in the “snapshot metrics” table. This is because units are meant to be counted for a student everywhere, and not only for colleges where they were a “first time non-special admit credit enrollment” student.</p>
CV_408_courses	Int	Y	N	<p>SM 408Cx Course Success Rate for All Cohort Student in their First Year from First Term</p> <p>Used to total the number of courses completed for SM 338 All Student Credit Enrollments with Grades Allowable for Course Success Rate Calculation in the Selected Year and SM 408 Course Success Rate.</p> <p>Note: CV_338 and CV_408 are the only “cohort view” metrics to live in the “snapshot metrics” table. This is because units are meant to be counted for a student everywhere, and not only for colleges where they were a “first time non-special admit credit enrollment” student.</p>

6.7.2 Resource Diagram



6.8 Definition for cohort_view_metrics Table

The cohort_view_metrics table is one of several wide tables representing student outcomes. Each record is a unique combination of student (with two possible unique identifiers), locale

(represents a college in this dataset), and year (smaller integer ID used for efficiency in calculation), with columns for the measured metric outcomes.

The enrollment requirement for the first time cohort view within Student Success Metrics

is used for population of this table. This table is only relevant to the Student Success Metrics dashboard.

This table is a subset of the snapshot_view_metrics table where each student who meets the cohort view definition is represented in this table 3 times for each locale and year for which the student meets the first time cohort view definition. Once each for the 3 year, 4 year, and 6 year measurements.

The metric column naming convention described for the snapshot_view_metrics table also applies to the cohort_view_metrics table, with the exception that the prefix for each of these metrics is “CV_” rather than “CO_” to represent the cohort view version of metrics. It’s common for both cohort view and snapshot versions of the same metric to exist; so, this is used to differentiate between the two.

6.8.1 File Layout

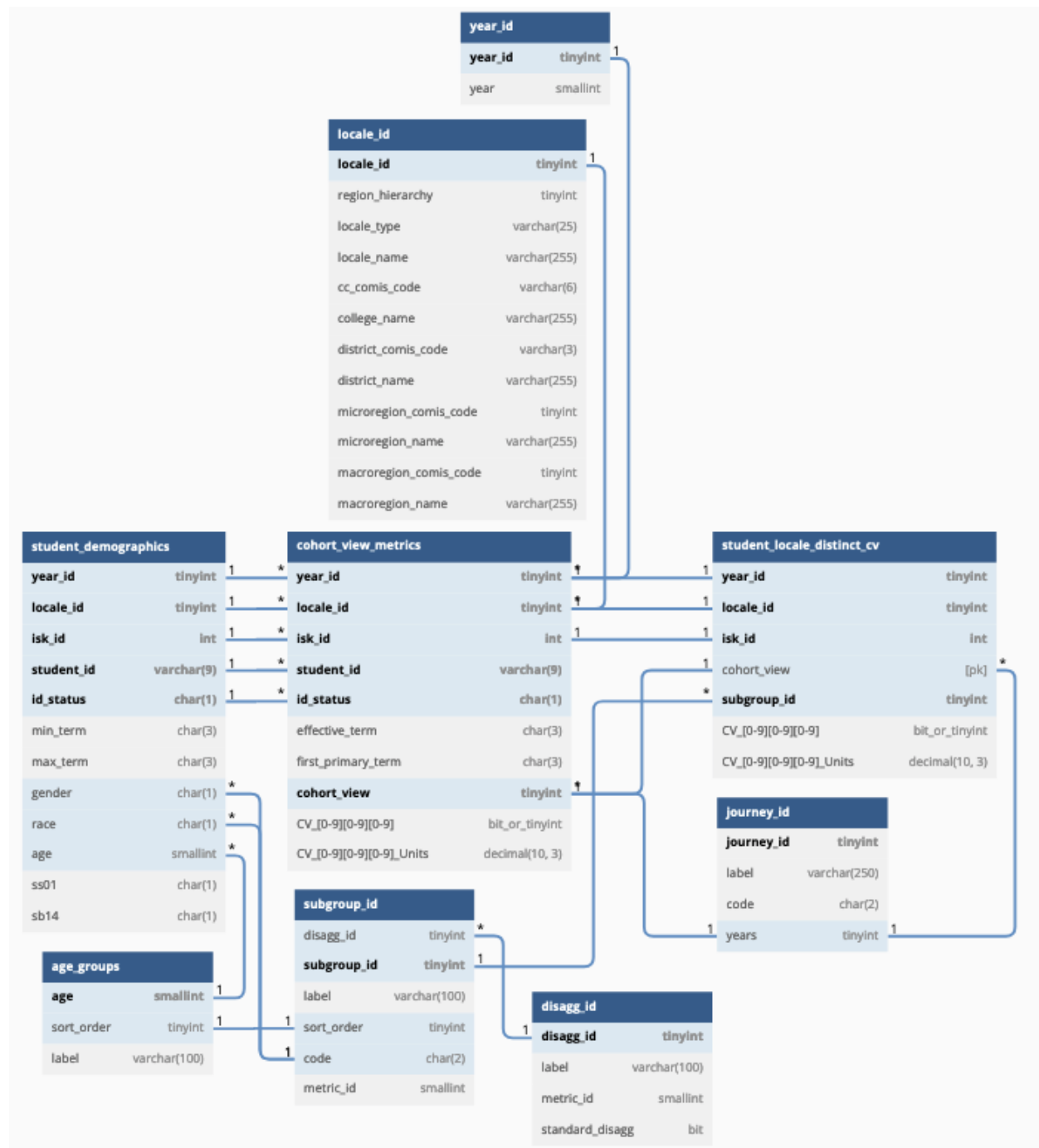
Column Name	Data Type	Is Nullable	Is PK	Brief Description
Year_id	Tinyint	N	Y	Integer id value the year for which a student is being measured References year_id.year_id
Locale_id	Tinyint	N	Y	Integer id value the locale for which a student is being measured References locale_id.locale_id
Isk_id	int	N	Y	Integer ID value for a student’s derived key. This is established as the student identifier for Launchboard dashboards (I.e. unique student counts are unique isk_id counts). This key is derived from a student’s name, gender, and date of birth and converted to an integer value based on a hashing algorithm. Neither the student’s PII nor the hashed values are provided in this data set.
Student_id	Varchar(9)	N	Y	A student’s SB00 value from MIS

Id_status	Char(1)	N	Y	A student's SB01 value from MIS
Effective_term	Char(3)	Y	N	The GI03 value of the term for which the students' "cohort length" will start for measurement. This is different than the student's first non-special-admit term with credit enrollment only in cases where that student's first term was in Summer.
First_primary_term	Char(3)	Y	N	If a student's first term was in Summer (a non-primary term), this will represent the GI03 value of the first primary term for which the student later had an enrollment.
Cohort_view	tinyint	N	Y	Integer value representing the timeframe for which the metric is measured. 3, 4, and 6 year values – one for each cohort view time frame to measure.
CV_122	Bit	N	Y	SM 122FC All Students in the First-Time Cohort
CV_233	Bit	Y	N	SM 233Cx All Cohort Students Still Enrolled (in any community college) After Cohort Timeframe
CV_330	Bit	Y	N	SM 330Cx All Cohort Students Who Earned Their First Associate Degree in the Selected Year
CV_405_units	Decimal(10,3)	Y	N	SM 405Cx Average Total Number of Semester (Quarter) Units Successfully Completed by All Cohort Students (SM 445Cx Quarter Units)

CV_453	Bit	Y	N	SM 453Cx All Cohort Students Who Persisted from First Primary Term of Enrollment to the Subsequent Primary Term
CV_455_units	Decimal(10,3)	Y	N	SM 455Cx Average Total Number of Semester (Quarter) Units Successfully Completed by All Cohort Students in their First Year from First Term (SM 465C Quarter Units)
CV_501	Bit	Y	N	SM 501Cx All Cohort Students Who Completed Both Transfer-Level Math and English Within the District in the First Year Aligned with SCFF (SM 504Cx)
CV_502	Bit	Y	N	SM 502Cx All Cohort Students Who Completed Transfer-Level Math Within the District in the First Year Aligned with SCFF (SM 507Cx)
CV_503	Bit	Y	N	SM 503Cx All Cohort Students Who Completed Transfer-Level English Within the District in the First Year Aligned with SCFF (SM 509Cx)
CV_541	Bit	Y	N	SM 541Cx All Cohort Students Who Completed Both Transfer-Level Math and English Within the District in Their First Year from First Term or Within Three Years from First Term for Credit ESL Students (SM 504Cx)
CV_542	Bit	Y	N	SM 542Cx All Cohort Students Who Completed Transfer-Level Math Within the District in Their First Year from First Term or Within Three Years from First

				Term for Credit ESL Students (SM 507Cx)
CV_543	Bit	Y	N	SM 543Cx All Cohort Students Who Completed Transfer-Level English Within the District in Their First Year from First Term or Within Three Years from First Term for Credit ESL Students (SM 509Cx)
CV_613_units	Decimal(10,3)	Y	N	SM 613Cx Average Number of Semester (Quarter) Units Accumulated by All First-Time in the System Associate Degree Earners in the Cohort (SM 627Cx Quarter Units)
CV_614	Bit	Y	N	SM 614Cx All Cohort Students Who Transferred to a CSU or UC Institution (SM 622Cx)
CV_615	Bit	Y	N	SM 615Cx All Cohort Students Who Transferred to a Private College In-State (SM 622Cx)
CV_616	Bit	Y	N	SM 616Cx All Cohort Students Who Transferred to Any Out-of-State College (SM 622Cx)
CV_620	Bit	Y	N	SM 620Cx All Cohort Students Who Transferred to a Four-Year Postsecondary Institution (SM 622Cx)
CV_701	Bit	Y	N	SM 701Cx All CTE Exiter Cohort Students Who Reported Working in a Job Closely Related to Their Field of Study

6.8.2 Resource Diagram



6.9 Definition for student_demographics Table

The student_demographics table is one of several wide tables representing student outcomes. Each record is a unique combination of student (with two possible unique identifiers), locale (represents a college in this dataset), and year (smaller integer ID used for efficiency in calculation), with columns for the measured metric outcomes.

This table has a one-to-one relationship with the snapshot_view_metrics table.

The information contained in this table is used to summarize information gathered and resolved for a student's singular record at a given locale and year. In the case that a student has conflicting information across terms for the locale and year, the value for the maximum term for which a student has enrollment is used.

6.9.1 File Layout

Column Name	Data Type	Is Nullable	Is PK	Brief Description
Year_id	Tinyint	N	Y	Integer id value the year for which a student is being measured References year_id.year_id
Locale_id	Tinyint	N	Y	Integer id value the locale for which a student is being measured References locale_id.locale_id
Isk_id	int	N	Y	Integer ID value for a student's derived key. This is established as the student identifier for Launchboard dashboards (i.e., unique student counts are unique isk_id counts). This key is derived from a student's name, gender, and date of birth and converted to an integer value based on a hashing algorithm. Neither the student's PII nor the hashed values are provided in this data set.
Student_id	Varchar(9)	N	Y	A student's SB00 value from MIS.
Id_status	Char(1)	N	Y	A student's SB01 value from MIS.
Min_term	Char(3)	Y	N	The GI03 value for the minimum term for which this student has enrollment for the locale and year.
Max_term	Char(3)	Y	N	The GI03 value for the maximum term for which this student has enrollment for the locale and year.

gender	Char(1)	Y	N	<p>The SB04 value for the maximum term for which this student has enrollment for the locale and year.</p> <p>References subgroup_id.code where subgroup_id.metric_id = SM 103 Gender</p>
race	Char(1)	Y	N	<p>The STD10 value for the maximum term for which this student has enrollment for the locale and year.</p> <p>References subgroup_id.code where subgroup_id.metric_id = SM 104 Race/Ethnicity</p>
age	Char(1)	Y	N	<p>A student's integer age determined by their SB03 value on October 15th of the trailing academic year (e.g., for 2019-2020 academic year, this would be 10/15/2019).</p> <p>References age_groups.age, where age_groups.label references subgroup_id.label where subgroup_id.metric_id = SM 105 Age Groups</p>
SS01	Char(1)	Y	N	<p>The SS01 value for the maximum term for which this student has enrollment for the locale and year. This is used to determine the journey status of students in the snapshot view.</p>
SB14	Char(1)	Y	N	<p>The SB14 value for the maximum term for which this student has enrollment for the locale and year. This is used to determine the journey status of students in the snapshot view.</p>

6.10 Definition for apprenticeship_metrics Table

The apprenticeship_metrics table is one of several wide tables representing student outcomes. Each record is a unique combination of student (only SSN is included as a student identifier), locale (represents a college in this dataset), and year (smaller integer ID used for efficiency in calculation), with columns for the measured metric outcomes.

[The apprenticeship definition within Student Success Metrics](#) is used for population of this table.

This table is separate from the snapshot_view_metrics table because the definition of apprenticeship does not require enrollment in the same way that snapshot_view_metrics does. For the purpose of Student Success Metrics, this table only contains one metric – CO_610. For other dashboards, more metrics are contained.

For this same reason, this table also contains demographic information specific to an apprenticeship student's apprenticeship status, and can be either:

1. Not present in the enrollment record for the same year in which they count as a snapshot_view_metrics student, which requires a separate resolution process, or
2. Present in the enrollment records for the same year in which they count as a snapshot_view_metrics student but with conflicting demographic information than their enrollment record for the same locale and year.

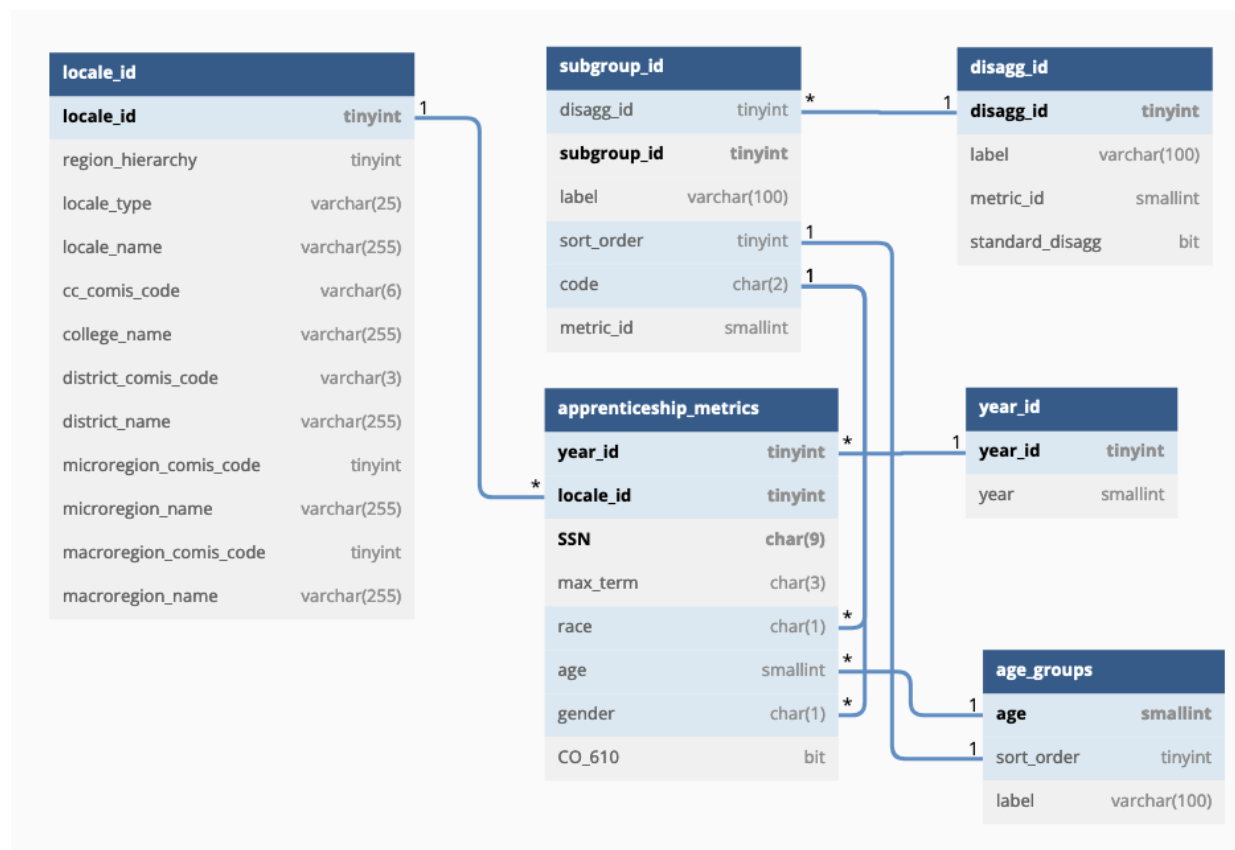
The metric column naming convention described for the snapshot_view_metrics table also applies to the cohort_view_metrics table.

6.10.1 File Layout

Column Name	Data Type	Is Nullable	Is PK	Brief Description
Year_id	Tinyint	N	Y	Integer id value the year for which a student is being measured References year_id.year_id
Locale_id	Tinyint	N	Y	Integer id value the locale for which a student is being measured References locale_id.locale_id
SSN	Char(9)	N	Y	A student's SSN value from their DAS record
Max_term	Char(3)	Y	N	The GI03 value for the maximum term for which this student has enrollment for the locale in the year the student began their apprenticeship.

race	Char(1)	Y	N	<p>The STD10 value for the maximum term for which this student has enrollment for the locale in the year the student began their apprenticeship.</p> <p>References subgroup_id.code where subgroup_id.metric_id = SM 104 Race/Ethnicity</p>
age	Char(1)	Y	N	<p>A student's integer age determined by their SB03 value on October 15th of the trailing academic year (e.g. for 2019-2020 academic year, this would be 10/15/2019).</p> <p>References age_groups.age, where age_groups.label references subgroup_id.label where subgroup_id.metric_id = SM 105 Age Groups</p>
gender	Char(1)	Y	N	<p>The SB04 value for the maximum term for which this student has enrollment for the locale in the year the student began their apprenticeship.</p> <p>References subgroup_id.code where subgroup_id.metric_id = SM 103 Gender</p>
CO_610	bit	Y	N	<p>SM 610Sx Students Who Attained Apprenticeship Journey Status (SM 600Sx Wrapper Metric)</p>

6.10.2 Resource Diagram



6.11 Definition for award_metrics Table

The award_metrics table is one of several wide tables representing student outcomes. Each record is a unique combination of student (with two possible unique identifiers), locale (represents a college in this dataset), and year (smaller integer ID used for efficiency in calculation), with columns for the measured metric outcomes.

[The award attainment requirement for students within Student Success Metrics](#) is used for population of this table, which includes a slightly different enrollment definition than the snapshot_view_metrics table – this table requires enrollment *in the district* but not necessarily *at the college* in the year for which they are counted. This means that demographic information can vary slightly for students on the dashboard contained in this table, and a full set of demographic information may not be available for this export in multi-college districts. We recommend filling in these gaps using data available locally.

The metric column naming convention described for the snapshot_view_metrics table also applies to the award_metrics table.

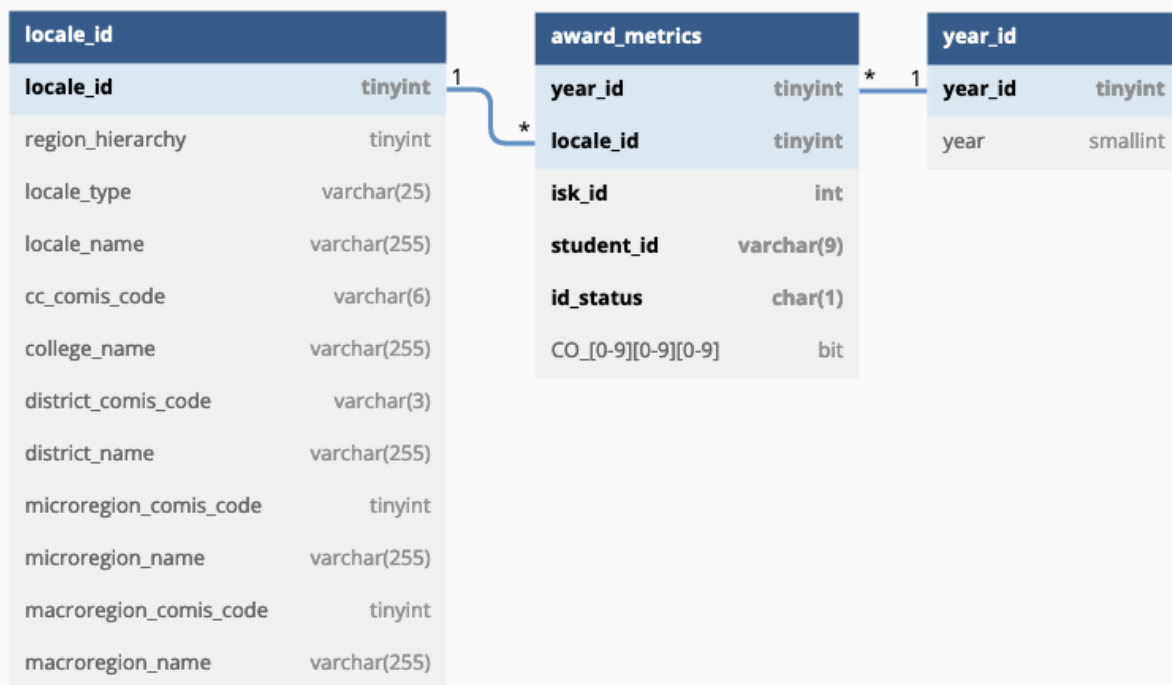
6.11.1 File Layout

Column Name	Data Type	Is Nullable	Is PK	Brief Description
-------------	-----------	-------------	-------	-------------------

Year_id	Tinyint	N	Y	Integer id value the year for which a student is being measured References year_id.year_id
Locale_id	Tinyint	N	Y	Integer id value the locale for which a student is being measured References locale_id.locale_id
Isk_id	int	N	Y	Integer ID value for a student's derived key. This is established as the student identifier for Launchboard dashboards (i.e., unique student counts are unique isk_id counts). This key is derived from a student's name, gender, and date of birth and converted to an integer value based on a hashing algorithm. Neither the student's PII nor the hashed values are provided in this data set.
Student_id	Varchar(9)	N	Y	A student's SB00 value from MIS
Id_status	Char(1)	N	Y	A student's SB01 value from MIS
CO_603	Bit	Y	N	SM 603Sx Students in Selected Student Journey Who Earned a Chancellor's Office Approved Credit Certificate (SM 600Sx Wrapper Metric)
CO_604	Bit	Y	N	SM 604Sx Students in Selected Student Journey Who Earned Noncredit Certificate (SM 600Sx Wrapper Metric)
CO_607	Bit	Y	N	SM 607Sx Students in Selected Student Journey Who Earned an AA or AS Degree (not for transfer) (SM 600Sx Wrapper Metric)
CO_608	Bit	Y	N	SM 608Sx Students in Selected Student Journey Who Earned an Associate Degree for Transfer (SM 600Sx Wrapper Metric)

CO_609	Bit	Y	N	SM 609Sx Students in Selected Student Journey Who Earned a Community College Bachelor's Degree (SM 600Sx Wrapper Metric)
CO_619	Bit	Y	N	SM 619Sx Students in Selected Student Journey Who Attained the Vision Goal Completion Definition (SM 600Sx Wrapper Metric)
CO_631	Bit	Y	N	SM 631Sx Students in Selected Student Journey Who Earned any Associate Degree (SM 600Sx Wrapper Metric)

6.11.2 Resource Diagram



6.12 Definition for award_unit_metrics Table

The award_unit_metrics table is one of several wide tables representing student outcomes. Each record is a unique combination of student (with two possible unique identifiers), locale (represents a college in this dataset), and year (smaller integer ID used for efficiency in calculation), with columns for the measured metric outcomes.

A looser definition of the award requirement for the students within Student Success Metrics is used for population of this table – this table requires no enrollment for the year in which a student is counted. This means that demographic information can vary slightly for students on the dashboard contained in this table, and the data for which has been provided explicitly in this table.

In general, the demographic information contained in this table is determined by the maximum term in which a student has enrollment at the college for which they are being counted, which as described above, may sometimes be before the year for which they are being counted. In some edge cases, a student *never* had an enrollment record at the college for which they are being counted, and the demographic information for the maximum term for which the student had enrollment *anywhere* is determined from where that enrollment took place in the system.

The metric column naming convention described for the snapshot_view_metrics table also applies to the award_unit_metrics table.

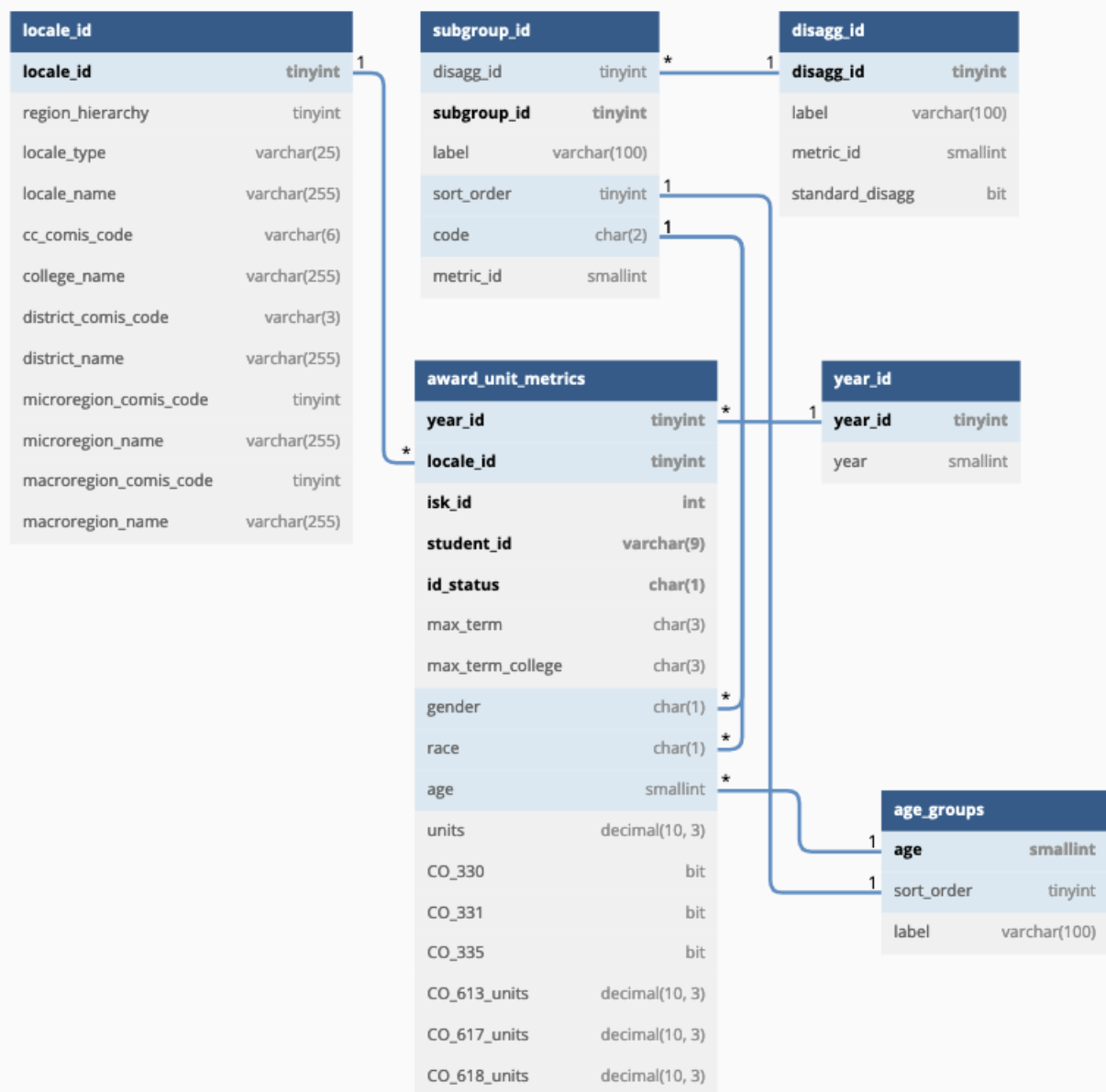
6.12.1 File Layout

Column Name	Data Type	Is Nullable	Is PK	Brief Description
Year_id	Tinyint	N	Y	Integer id value the year for which a student is being measured References year_id.year_id
Locale_id	Tinyint	N	Y	Integer id value the locale for which a student is being measured References locale_id.locale_id
Isk_id	int	N	Y	Integer ID value for a student's derived key. This is established as the student identifier for Launchboard dashboards (i.e. unique student counts are unique isk_id counts). This key is derived from a student's name, gender, and date of birth and converted to an integer value based on a hashing algorithm. Neither the student's PII nor the hashed values are provided in this data set.
Student_id	Varchar(9)	N	Y	A student's SB00 value from MIS

Id_status	Char(1)	N	Y	A student's SB01 value from MIS
Max_term	Char(3)	Y	N	The GI03 value for the maximum term for which this student has enrollment overall.
Max_term_college	Char(3)	Y	N	The GI03 value for the maximum term for which this student has enrollment for the locale.
gender	Char(1)	Y	N	The SB04 value for the maximum term for which this student has enrollment for the locale, or overall if the student has no enrollment at the locale. References subgroup_id.code where subgroup_id.metric_id = SM 103 Gender
race	Char(1)	Y	N	The STD10 value for the maximum term for which this student has enrollment for the locale, or overall if the student has no enrollment at the locale. References subgroup_id.code where subgroup_id.metric_id = SM 104 Race/Ethnicity
age	Char(1)	Y	N	A student's integer age determined by their SB03 value on October 15 th of the trailing academic year (e.g. for 2019-2020 academic year, this would be 10/15/2019). References age_groups.age, where age_groups.label references subgroup_id.label where subgroup_id.metric_id = SM 105 Age Groups

units	Decimal(10,3)	Y	N	The number of units a student earned prior to earning their award.
CO_330	Bit	Y	N	SM 330SW All Students Who Earned Their First Associate Degree in the Selected Year
CO_331	Bit	Y	N	SM 331SW All Students Who Earned Their First Associate Degree (Not for Transfer) in the Selected Year
CO_335	Bit	Y	N	SM 335SW All Students Who Earned Their First Associate Degree for Transfer in the Selected Year
CO_613_units	Decimal(10,3)	Y	N	SM 613Sx Average Number of Semester Units Accumulated by All First-Time Associate Degree Earners in Selected Student Journey (SM 621Sx Wrapper Metric)
CO_617_units	Decimal(10,3)	Y	N	SM 617Sx Average Number of Semester Units Accumulated by All First-Time AA/AS Degree (Not for Transfer) Earners in Selected Student Journey (SM 621Sx Wrapper Metric)
CO_618_units	Decimal(10,3)	Y	N	SM 618Sx Average Number of Semester Units Accumulated by All First-Time Associate Degree for Transfer Earners in Selected Student Journey (SM 621Sx Wrapper Metric)

6.12.2 Resource Diagram



6.13 Definition for cccapply_metrics Table

The cccapply_metrics table is one of several wide tables representing student outcomes. Each record is a unique combination of student (only SSN is included as a student identifier), locale (represents a college in this dataset), and year (smaller integer ID used for efficiency in calculation), with columns for the measured metric outcomes.

[The definition for applicants within Student Success Metrics](#) is used for population of this table – this table requires no enrollment for the year in which a student is counted. This means that demographic information can vary slightly for students contained in both this table and the enrollment tables. For metrics that require both application and enrollment, the application demographic information is used.

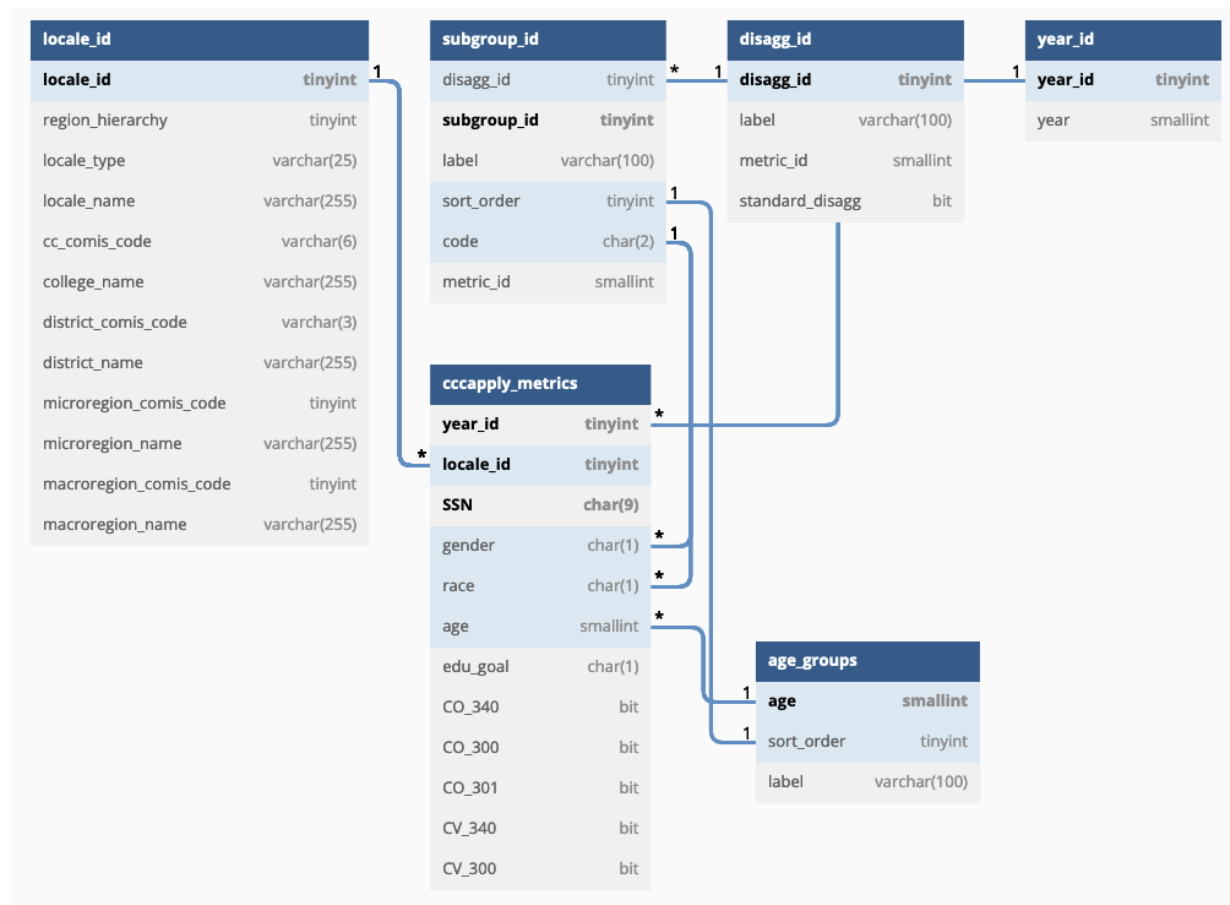
The metric column naming convention described for the snapshot_view_metrics and for the cohort_view_metrics tables also applies to the cccapply_metrics table.

6.13.1 File Layout

Column Name	Data Type	Is Nullable	Is PK	Brief Description
Year_id	Tinyint	N	Y	Integer id value the year for which a student is being measured References year_id.year_id
Locale_id	Tinyint	N	Y	Integer id value the locale for which a student is being measured References locale_id.locale_id
SSN	Char(9)	N	Y	An applicant's SSN
age	Char(1)	Y	N	A student's integer age determined by their DOB value on October 15 th of the trailing academic year (e.g., for 2019-2020 academic year, this would be 10/15/2019). Aligns with SB03 References age_groups.age, where age_groups.label references subgroup_id.label where subgroup_id.metric_id = SM 105 Age Groups
gender	Char(1)	Y	N	The gender code provided on a student's application file. Aligns with SB04 References subgroup_id.code where subgroup_id.metric_id = SM 103 Gender
race	Char(1)	Y	N	The gender code provided on a student's application file. Aligns with STD10

				References subgroup_id.code where subgroup_id.metric_id = SM 104 Race/Ethnicity
Edu_goal	Char(1)	Y	N	The SS01 value from the student's application file. This is used to determine the journey status of students in the application metrics.
CO_340	bit	Y	N	SM 340SW All Applicants Who Applied to Attend in the Selected Year Through OPEN CCC Apply or Through International CCC Apply
CO_300	bit	Y	N	SM 300SW Applicants Who Enrolled in the Same Community College in the Selected Year in the Selected Student Journey (SM 302Sx Wrapper Metric)
CO_301	bit	Y	N	SM 301SW Applicants Who Enrolled in Any Community College in the Selected Year in the Selected Student Journey (SM 302Sx Wrapper Metric)
CV_340	bit	Y	N	SM 340Cx All Prospective Students Who Applied for the First-Time to Attend in the Selected Year Through OPEN CCC Apply or Through International CCC Apply in OPEN CCC Apply
CV_300	bit	Y	N	SM 300Cx All Cohort Student Applicants Who Enrolled in the Same Community College

6.13.2 Resource Diagram



6.14 Definition for cteos_metrics table

The cteos_metrics table is one of several wide tables representing student outcomes. Each record is a unique combination of student (only SSN is included as a student identifier), locale (represents a college in this dataset), and year (smaller integer ID used for efficiency in calculation), with columns for the measured metric outcomes.

[The exiter definition within Student Success Metrics](#) with an addendum to require a response to the CTEOS survey 2 years later is used for population of this table.

This table is separate from the snapshot_view_metrics table because of the increased reliance of the metric outcomes on the response_id reference (NOTE: not included in the beta release, as the only metric included in the table at time of beta release is SM 701 CTE Exiters in Selected Student Journey Who Reported Working in a Job Closely Related to Their Field of Study, which is a simple mapping of the true responses in the MDD [here](#)).

The metric column naming convention described for the snapshot_view_metrics table also applies to the cohort_view_metrics table.

6.14.1 File Layout

Column Name	Data Type	Is Nullable	Is PK	Brief Description
Year_id	Tinyint	N	Y	Integer id value the year for which a student is being measured References year_id.year_id
Locale_id	Tinyint	N	Y	Integer id value the locale for which a student is being measured References locale_id.locale_id
Isk_id	int	N	Y	Integer ID value for a student's derived key. This is established as the student identifier for Launchboard dashboards (i.e., unique student counts are unique isk_id counts). This key is derived from a student's name, gender, and date of birth and converted to an integer value based on a hashing algorithm. Neither the student's PII nor the hashed values are provided in this data set.
Student_id	Varchar(9)	N	Y	A student's SB00 value from MIS
Id_status	Char(1)	N	Y	A student's SB01 value from MIS
CO_701	tinyint	Y	N	CO 701

[for Student Success Metrics](#) is used for population of this table, with the disaggregation subgroups resolved for conflicts.

The metric column naming convention described for the snapshot_view_metrics table also applies to the student_locale_distinct table.

6.15.1 File Layout

Column Name	Data Type	Is Nullable	Is PK	Brief Description
Year_id	Tinyint	N	Y	Integer id value the year for which a student is being measured References year_id.year_id
Locale_id	Tinyint	N	Y	Integer id value the locale for which a student is being measured. References locale_id.locale_id
Isk_id	int	N	Y	Integer ID value for a student's derived key. This is established as the student identifier for Launchboard dashboards (i.e. unique student counts are unique isk_id counts). This key is derived from a student's name, gender, and date of birth and converted to an integer value based on a hashing algorithm. Neither the student's PII nor the hashed values are provided in this data set.
CO_214	Bit	Y	N	CP 214 Full Time CCP Students with 12+ Units in Each Primary Term of Enrollment in the Selected Year (metric not in SSM)
CO_641	Bit	Y	N	SM 641Sx Students in Selected Student Journey Who Attained the Vision Goal Completion Definition or Who Transferred to a Four-Year Institution

Subgroup_id	Tinyint	N	Y	Subgroup_id resolved for the student (as an isk_id), locale, and year. References subgroup_id.subgroup_id
-------------	---------	---	---	---

6.16 Definition for student_locale_distinct_cv Table

The student_locale_distinct_cv table is a similar hybrid wide/long table as student_locale_distinct, representing student outcomes for disaggregations and metrics being resolved specifically at a given locale, with the additional measure of meeting the metric outcomes across the length of each cohort view (3, 4, and 6 years). Each record is a unique combination of student (with only isk_id as the unique student identifier), locale (represents a college in this dataset), year, cohort_view, and disaggregation subgroup, representing a student's disaggregation status resolved across records for that locale, with columns for the measured metric outcomes. This data is derived from cohort_view_metrics, including all standard disaggregations resolved for conflicts where necessary, and only containing metrics which are necessary to resolve.

Because the data provided is explicitly college level records, for the purposes of this documentation, the long format only represents a resolution of demographic information. However, in the full dataset, this can represent a resolution of a student meeting a metric outcome that may not have been completed at any one college but did when considered across all colleges – full time status as an example. Additionally, if conflicting information exists for a metric outcome, the conflicts are resolved at each locale level. [The first time cohort enrollment requirement for Student Success Metrics](#) is used for population of this table, with the disaggregation subgroups resolved for conflicts.

The metric column naming convention described for the cohort_view_metrics table also applies to the student_locale_distinct_cv table.

6.16.1 File Layout

Column Name	Data Type	Is Nullable	Is PK	Brief Description
Year_id	Tinyint	N	Y	Integer id value the year for which a student is being measured References year_id.year_id
Locale_id	Tinyint	N	Y	Integer id value the locale for which a student is being measured. References locale_id.locale_id
Isk_id	int	N	Y	Integer ID value for a student's derived key. This is established

				as the student identifier for Launchboard dashboards (i.e. unique student counts are unique isk_id counts). This key is derived from a student's name, gender, and date of birth and converted to an integer value based on a hashing algorithm. Neither the student's PII nor the hashed values are provided in this data set.
Cohort_view	tinyint	N	Y	Integer value representing the timeframe for which the metric is measured. 3, 4, and 6 year values – one for each cohort view time frame to measure. References journey_id.year
Subgroup_id	Tinyint	N	Y	Subgroup_id resolved for the student (as an isk_id), locale, and year. References subgroup_id.subgroup_id
CV_210	Bit	Y	N	SM 210Cx All Cohort Students Enrolled Full Time in Their First Year from First Term
CV_214	Bit	Y	N	SM 210Cx All Cohort Students Enrolled Full Time in Their First Primary Term
CV_603	Bit	Y	N	SM 603Cx All Cohort Students Who Earned a Chancellor's Office Approved Credit Certificate (SM 600Cx)
CV_607	Bit	Y	N	SM 607Cx All Cohort Students Who Earned an Associate Degree (not for transfer) (SM 600Cx)

CV_608	Bit	Y	N	SM 608Cx All Cohort Students Who Earned an Associate Degree for Transfer (SM 600Cx)
CV_619	Bit	Y	N	SM 619Cx All Cohort Students Attained the Vision Goal Completion Definition (SM 600Cx)
CV_631	Bit	Y	N	SM 631Cx All Cohort Students Who Earned an Associate Degree (SM 600Cx)
CV_641	Bit	Y	N	SM 641Cx All Cohort Students Who Attained the Vision Goal Completion Definition or Who Transferred to a Four-Year Institution

7. Qualification Methods

Currently no additional qualification methods are being used. Qualification methods may be added later through document change control.

Appendix A: Acronyms

Below are the key terms and associated definitions that are included in this document. The table below can be used to reference acronyms and abbreviations.

Acronym	Literal Translation
CCCCO	California Community College Chancellor's Office
DED	Data Element Dictionary
MDD	Metric Definition Document
SSM	Student Success Metrics
DSPS	Disability Services and Programs for Students
EOPS	Extended Opportunity Programs and Services
ICD	Interface Control Document
MDD	Metric Definition Dictionary
MIS	Management Information System
MOU	Memorandum of Understanding
SSSP	Student Success and Support Program
VTEA	Vocational and Technical Education Act

Appendix B: Referenced Documents

Below are documents containing supplemental data around data elements, provenance, keys, definitions, values, and content. Information pertaining to the dataset not contained in this document can be found in one of the attached dictionaries.

Document Name	Document Location and/or URL	Owner	Issuance Date
MIS Data Element Dictionary	https://webdata.cccco.edu/ded/	Todd Hoig – MIS Director of Management Information Systems	07/01/2019
SSM Metric Definition Dictionary	https://www.calpassplus.org/Launchboard/Student-Success-Metrics-MDD	Karen Beltramo - WestEd	07/29/22

Appendix C: Approvals

The undersigned acknowledge that they have reviewed the ICD and agree with the information presented within this document. Changes to this ICD will be coordinated with, and approved by, the undersigned, or their designated representatives.

Document Approved By	Date Approved
Name: Kyle Davis – Senior Research Associate, Post-Secondary Pathways and Career Mobility, WestEd	Date 12/22/22
Name: Patty Sanders – Research Data Specialist, Research and Data Analytics, California Community Colleges Chancellor's Office	Date 12/23/22